

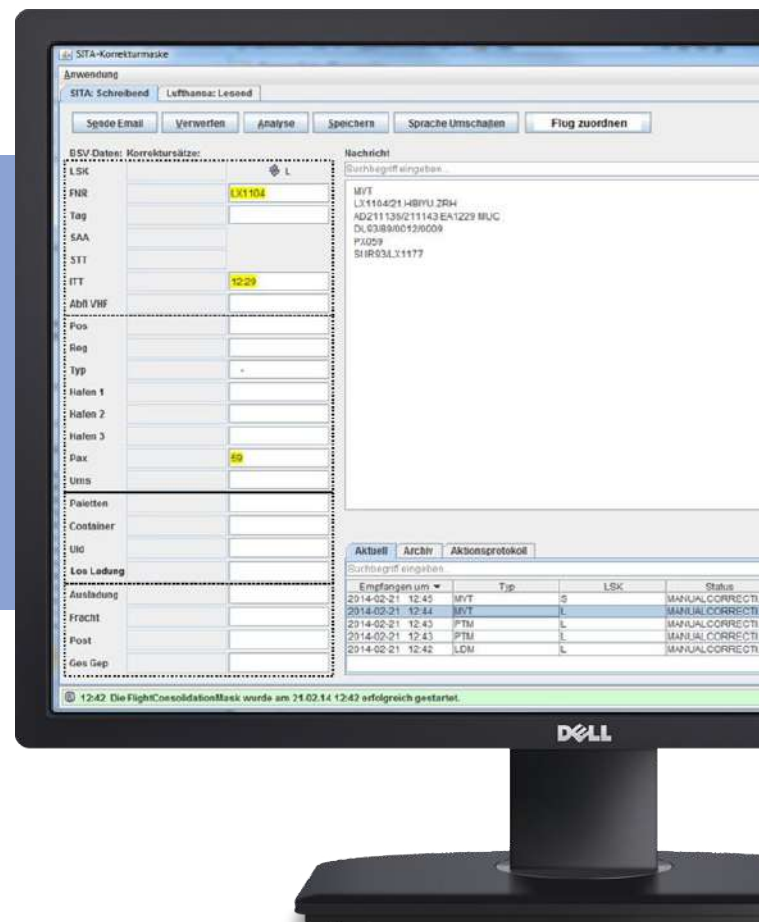
## An International Airport

### Challenges

The customer required a system of automatic input flight information control with options of manual information control by a person (flight operations officer) before it is reflected on the display.



The system should comply with the demands of consistency, availability, partition tolerance, should be available 24/7 and guarantee total data safety.



## Solution

Our team has developed a system that controls the input information about flights in the airport, working on programmed rules. Based on this data, the system decides if flight information is right or wrong and sends messages about flights on flight information display, and, depending on this information, corrects it automatically, or allows correcting it manually by a flight operations officer, if automatic correction is impossible. Manual message correction is performed via a separate module with visual aid that can run on any machine with net access to the module that recognizes display messages with flight information.

## Features



Use automatic handling of flight information input



Take decisions on flight info being correct or wrong



Send messages about flights to flight information display



Correct automatically



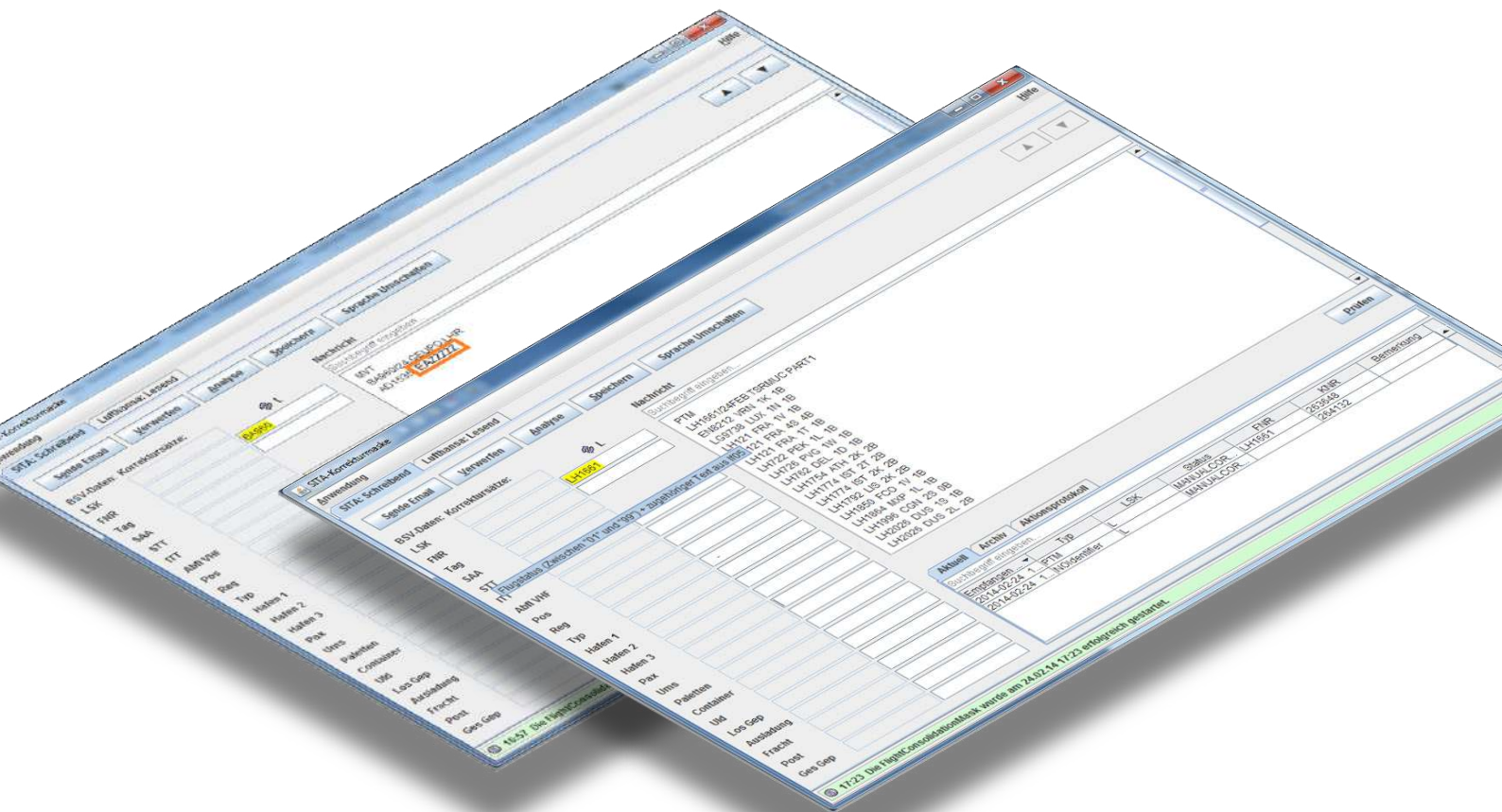
Use interface for manual information correction



Get 24/7 access to the system



Protect against data loss



## Technologies Used

